



COMMITTEE UPDATE

City Water, Light & Power

March 25, 2025

AGENDA

Carbon Capture & Carbon Safe Project Updates

Integrated Resource Plan (IRP)

AMIs Advanced Metering Infrastructure

US DOE / U of I Carbon Research Projects

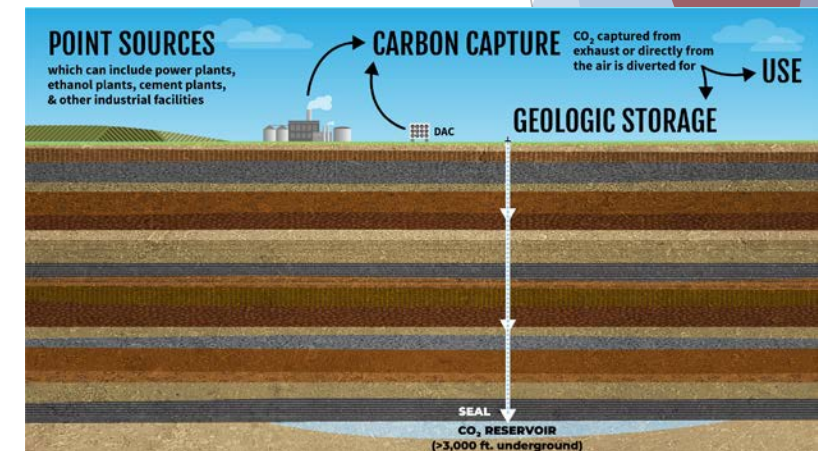
Carbon Capture Large PILOT Update

- Operation to begin near beginning of May
- Catch & Release of CO₂ –tests ability of solvent to capture CO₂, and demonstrate large scale ability and economics.



Carbon Safe Grant

- Geologic data collection for U of I only.
- Test well to be drilled sometime late summer and will be capped.
- This research does not inject, capture or store CO₂



Integrated Resource Plan



State legislation pending requiring all municipal utilities to complete IRPs. [HB 2902](#) (Being pushed by Sierra Club and others)

- New Legislation beyond 2021 Clean Energy Jobs Act(CEJA)
- Requires IRPs every 3 years only for Municipal and Cooperative electric utilities, not investor owned which have a much larger impact.
- As filed, it gives oversight of generation and resource planning to the Illinois Power Agency
- Mandates prescriptive IRPs with a Renewable Portfolio Standard, what scenarios must be included, places mandates on who can perform IRPs; how public participation is conducted.
- The bill, as introduced, would be unnecessary, add risk and cost and give up local control that CWLP customers currently have.

CWLP will hold on IRP to ensure that it meets the requirement of the legislation if passed this session.



AMI Meters

What is AMI?



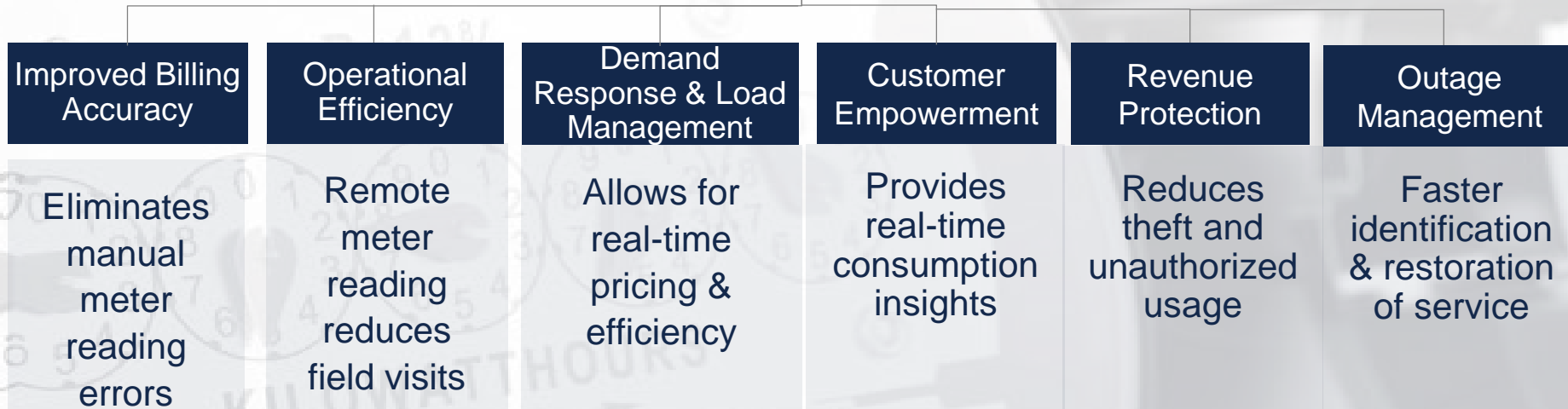
Advanced Metering Infrastructure (AMI) enables utilities to:

- Automatically collect meter readings
- Enable real-time monitoring and control
- Enhance billing accuracy and revenue collection
- Improve customer engagement and efficiency
- Support future smart grid applications

What is AMI?

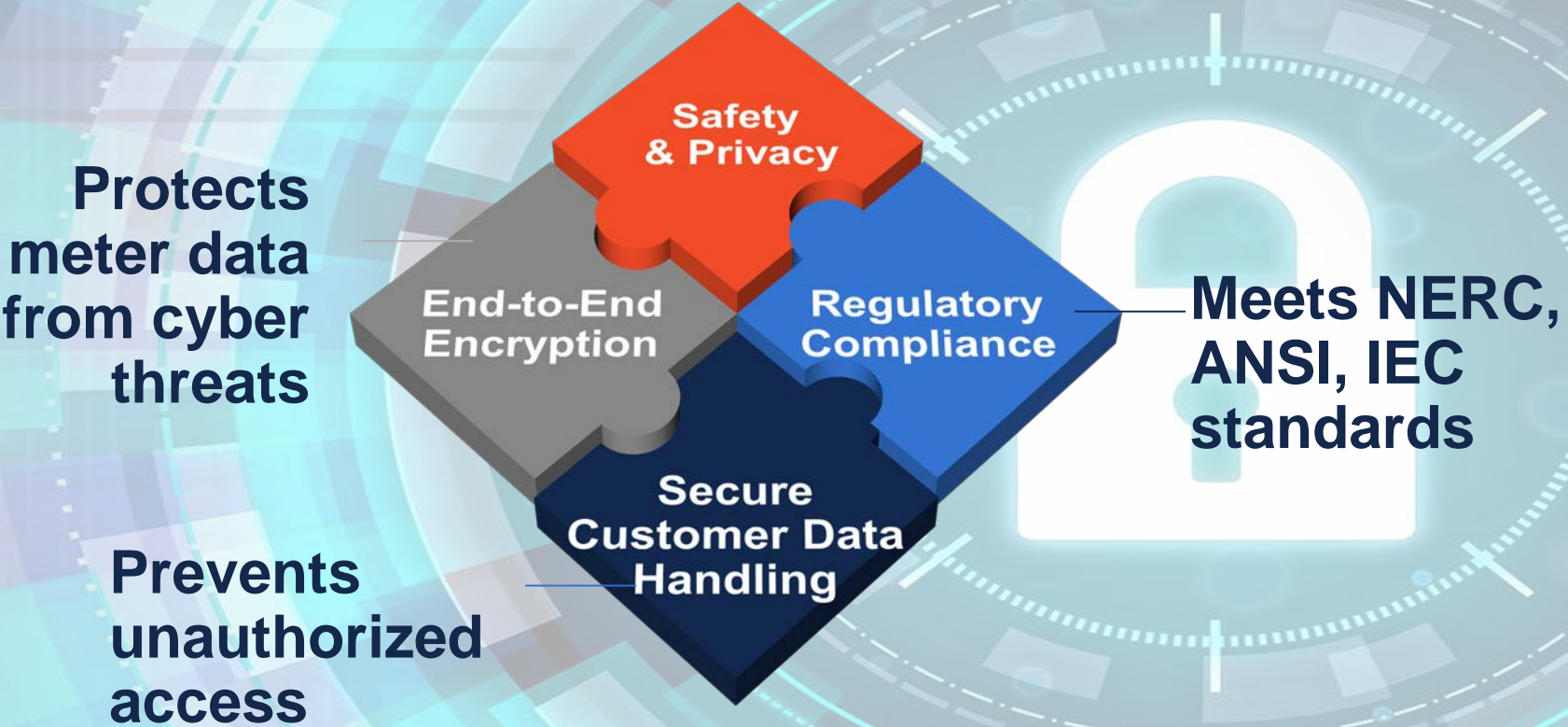


Key Benefits of AMI



240V3W • FM2S Kh7.2
WATTHOUR METER SHKN - B25
CAT. NO. 720x70
No 54867892451

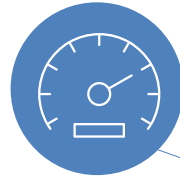
Security & Compliance Considerations



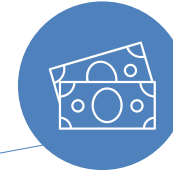
Customer Benefits



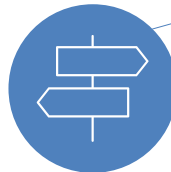
Real-time Usage
Monitoring Helps
reduce energy costs



Flexible Billing Options
Pre-pay and time-of-use
rates



**Customer
Benefits**



Greater Transparency
Online portal for
energy insights

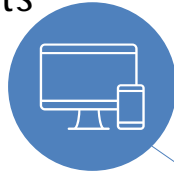


Faster Outage Restoration Utility
receives instant failure alerts

CWLP Operations Benefits



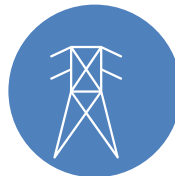
Enhanced Data Collection
15-minute interval reads
improve insights



Security & Compliance
Ensures encrypted
data transmission



Grid Optimization
Supports real-time
load balancing



Remote
Disconnect/Reconnect
Reduces truck rolls and
labor costs





Upgrading Electric Meters

All existing electric meters, 70,000+, are AMR Meters

- AMR Meters are one way, intermittent communication and only transmit basic meter reading data.
- Not capable of receiving commands or updates remotely.

The transition to AMI meters will be funded by the savings of the 2025 Electric Bond Refinancing.

The new installed system will be capable of reading water meters as they transition to AMI meters in the future.



CWLP AMI Implementation Schedule

Task		Start Date	End Date	Complete
RFP review, vendor selection and award		Feb 1, 2025	Jun 3, 2025	
	RFP Review Committee narrow 13 submitted proposals to 4	Feb 1, 2025	Mar 18, 2025	✓
	Committee Review of the final four proposals	Mar 19, 2025	Apr 11, 2025	
	Committee recommends final two vendors		Apr 11, 2025	
	Committee meets with final two vendors for clarification and finalize proposal and pricing	Apr 14, 2025	May 2, 2025	
	Award to final vendor	May 20, 2025	Jun 3, 2025	
Implementation		Jun 9, 2025	May 16, 2028	
	Network planning, design, testing and deployment	Jun 9, 2025	Nov 16, 2025	
	Software configuration/interface testing and training	Jun 23, 2025	Nov 20, 2025	
	Meter installation per billing cycles	Jan 30, 2026	May 1, 2028	
	Contract Closeout		May 16, 2028	



Thank
You